

Deming Elks News

In the Elkdom of the Sun

Volume 7 *** Number 11 *** December, 2004

Monthly Official Publication of

Deming Lodge #2799 B.P.O. Elks

PO Box 112 - 311 E. Maple

Deming, NM 88031-0112

(505) 546-2799

Email: secretary@demingelks.org

On the Web at: demingelks.org



Deming Lodge #2799 B.P.O.E.
Benevolent and Protective Order of Elks
P. O. Box 112
311 E. Maple
Deming, NM 88031-0112

In this issue:

Message from the Exalted Ruler

Bingo Report

Building Project Report

Secretary's Corner

Christmas Party



Saturday, December 18th. Gift exchange and Karaoke, light snacks and Christmas drinks. See calendar for details.

New Year's Eve Party

Celebrations at 10, 11 (including the 11th Hour Toast), midnight and 1 am. Open 'til 2 am. Buffet beginning at 10 pm, complementary glass of Champaign and party favors. Karaoke. Cost is \$8 per person or \$15 a couple.



Elks Memorial Services

Sunday, December 5th at 11 am. Coffee, juice and donuts to follow.

Monthly Pool Tournament

Double Elimination 8 Ball. Tournament begins at 1 pm. Entry fee \$5. See calendar for details. Finger Foods served.



Karaoke

By Mike E.

Dec. 4th

6 pm

Plus during Christmas and New Year's Parties.



Elks BINGO

Monday Nights at the DAV Hall
Free Christmas gifts on December 20th
Guaranteed \$300 payout December 20th on top-3-lines if no previous winner.

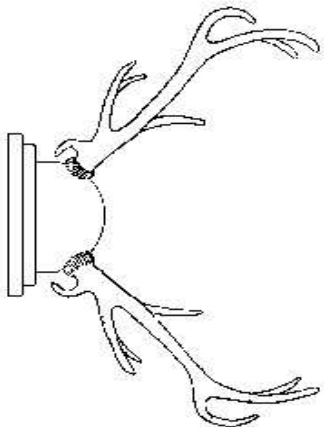
Doors Open at 5:30 pm
Early Bird Bingo at 6
Regular Bingo at 7
(Gifts on the 20th)

Open to the Public. Must be 18.



PROPOSE A FRIEND FOR MEMBERSHIP
WE'LL LIKE YOU
WE'LL LIKE YOUR FRIEND

Address Correction Requested



**B.P.O. Elks #2799
Officers & Committee Heads**

Elected Lodge Officers

EXALTED RULER- Fred Kent
LEADING KNIGHT - Ted Lautner PER
LOYAL KNIGHT- Dave Johnson
LECTURING KNIGHT- Roxy Dubiskas
SECRETARY- Mike Hedrick
TREASURER- Susan Burdette
TILER- JoAnn Olsen

Appointed Lodge Officers

ESQUIRE- Chris Rossman PER
INNER GUARD - Anna Enciso
CHAPLIN- Stanley Reid
ORGANIST- Barbara Schreiber

Board of Trustees

TRUSTEE 1 YR.- Arlo Mead
TRUSTEE 2 YR.- Ollie Cooper
TRUSTEE 3 YR.- Harriet Kirich PER
TRUSTEE 4 YR.- Vern Schreiber
CHAIRMAN TRUSTEE 5 YR.- Frank Chiprich

Committee Chairmen

AMERICANISM - Fred Kent ER
CEREBRAL PALSY - Harriet Kirich PER
C & B TRUST - JoAnn Olsen
NATIONAL FOUNDATION - Carl Olsen PER
VETERANS SERVICE - Headlee Burdette
LODGE ACTIVITIES - vacant
YOUTH ACTIVITIES - Chris Rossman PER
HOOP SHOOT - James Metz, Sr.
SOCCER SHOOT - Carl Olsen PER
PER ASSOCIATION - Ted Lautner PER
DRUG AWARENESS - Harriet Kirich PER
RITUAL- Dave Cummings PER
EDITOR/CYBER-ASSISTANT- Dave Johnson
MEMBERSHIP - Barbara Schreiber
LAPSATION - Vern Schreiber
ADVERTISING - May Lou Carlos
BINGO MANAGER - Richard Hughes

Lodge Meetings

1st & 3rd Thursdays

7:30 pm

Instituted February 1, 1997

Secretary's Corner

From Mike Hedrick- Secretary

By way of a Special Saturday initiation ceremony, we were able to bring in four new members this month.

Welcome to Patricia Johnson, Israel Renteria, Jr., Frank Milo and Rob L. Kirich. Let's make them feel welcome.

We also approved a reinstatement for Margaret Maxwell.

One member on the delinquent roll requested to be dropped due to non-payment. That means a net gain for the month of four. Our current membership is at 143, up from 121 at the beginning of the Lodge year. Even with the new younger members coming in, our average age is still over 78. We need to keep recruiting more members and younger members to survive.

At the meeting on December 2nd we will be balloting on Kari L. Strabley, proposed by Dave Johnson, and also the first reading for Patricia Hobbs, proposed by John Franks.

Already approved and awaiting initiation are Leroy Schimming proposed by Fran Chase and Rachel Moriarty proposed by Vern Schreiber. We hope to bring them in on December 16th, along with Strabley assuming a favorable vote.

One member paid, and one dropped. That means we are now down to only two members who have still not paid their dues. They are Henry Tilley Jr., and Hank E. Nelson. The fact that there are only two members who have not paid speaks well for our Lodge. We must be doing something right.

I would like to personally wish you and your family a Very Merry Christmas and a Happy New Year. We'll see you at the Lodge.



**Elks Care
Elks
Share**

Support Our Sponsors



KEN, LARRY, EMMITT

E & M AUTO REPAIR
1415 Highway 80 East
Deming, NM 88030
505-546-9315



316 E. Cedar
Deming, NM 88030
7597 N. Mesa 7597-1266
10059 Dyer 751-8100
581-8780 (505) 546-8883

JIM METZ

JAMES METZ, JR.

Metz Appliance Service

• WE SERVICE ALL BRANDS
• DISHWASHERS • WASHERS • DRYERS
• RANGES • MICROWAVE OVENS • REFRIGERATORS
• SMALL ENGINE REPAIR

(505) 546-9777

P.O. BOX 1441
DEMING, NM 88031



Mark Schultze
General Manager

Corner Florida & Columbus Hwy.
Post Office Box 191
Deming, New Mexico 88031
(505) 546-3922
Fax (505) 546-7840



P.O. BOX 511
DEMING, NM 88031

(505) 546-2691
FAX (505) 544-0284



**Tinley Tee
Tire Co., Inc.**

Alignment • Brakes • Exhaust

G.G. GORE
Owner

2020 Columbus Road
Deming, NM 88030
M-F 8-6 p.m. • Sat 8-2 p.m.



(505) 546-0463 • 1-800-698-0463 • Fax (505) 544-8473



Open 7 am to 8 pm • 7 Days
Breakfast Served All Day

218 W. Cedar St. Deming, NM (505) 546-2458

"Hospitality Is Our Business"

SUNRISE R.V. PARK
Reasonable Full Hookups

STAN REID
Manager

2601 E. Motel Dr.
Deming, NM 88030
Phone (505) 546-8565



Mike Dobosz
General Manager

1715 E. Pine
Deming, NM 88030
(505) 544-2446 • Fax (505) 544-4211 • After Hours (505) 494-1335
Tires • Wheels • Shocks • Brakes • Alignment • Struts • Lift Kits

SUN VALLEY, INC.



BRAD ACHEN, Vice President
P.O. Box 540
Hatch, NM 87937
Off. 505/267-4839
Fax 505/267-3403



1700 Columbus Road
Deming, NM 88030
505/544-3004
505/544-3025

These businesses have donated to help pay the cost of the monthly newsletter. Advertising Guidelines: You do not have to be an Elk. You do not have to be a business. The monthly donation is \$10. Contact the Lodge for information.

'Tis the Season

From Roxy Dubiskas- Lecturing Knight

As we begin this Glorious Season, no matter your religion, let us remember our less fortunate Elks, Family and Friends. Stop. Count your blessings, no matter how small they may seem, or how stressful your life may be. There are those that **would** trade places with you if but given a moments chance, no matter your lot in life.

GRASP a hand in true friendship no matter who's hand it may be, LIGHTEN your heart and the hearts of others by giving to soup kitchens, homeless shelters, even to your family, friends and neighbors who may be in need. BRING rest to a weary person who's heart may be broken by times past, who may be sitting alone, weeping during this season of Joy. COMFORT those who have need of a true heart, a shoulder, or just an ear to relieve a burden. Be willing to stand the test of time. Bring but one small gift of kindness to this table we call the world - and watch how it multiplies.

Pat Johnson is in need of old levis' to make lap quilts for the disabled (or serviceable cotton such as skirts or shirts to make the backing), Bingo is looking for a few dollars to make our players night special. Our Christmas Party and New Years committees are looking for volunteers. Our Veterans Service Chair-

man (Headlee Burdette) is looking for volunteers to help wrap gifts, the list goes on and on. Each task may in itself be small, but together, if we GIVE, BRING, DO, what we can - we will make a difference to make the season brighter for us all.

Editors Thoughts

From Dave Johnson- Editor

This marks one year that I have filled the position of newsletter editor. The first edition under my watch was December, 2003. It has been a busy year with many changes, one of the biggest is switching to all volunteer bartenders. This has definitely improved the bar's bottom line.

As bar manager, I would like to personally thank all the volunteers for making this work. We now have eleven certified members, but could still use more. We will let you know when the next local alcohol certification class will be.

In bar news, we now have our customer appreciation every night from 4-7 pm with \$1.50 domestic beer and \$1.75 well drinks. And you must come down for Finger Food Friday by Erik at noon. You won't believe some of the delicacies you'll find. Also, stop in for a special Seasonal Drink. We now have eggnog.

Happy Holidays!



Halloween: A good crowd attended the Halloween Karaoke Costume Contest on Saturday, Oct. 30th. 1st prize costume went to Mary Lou Carlos, and 2nd Place to Vern Schreiber. Karaoke by Mike Rudloff.



From the Exalted Ruler

Dear Brothers and Sisters,

This year is turning into a banner year as far as membership goes. By the end of the month we will have gained at least four new Elks and one reinstatement. This is the way to our new Lodge building.

The Halloween party was a blast. The food was excellent and the Karaoke following made for a great time. I even got up and sang. Of course I had some beautiful women singing with me, Marleen, Doris and Vern. Activities like this are the key to keeping the members active and interested.

The Bingo is going even better than I imagined. As rotten as the weather was last Monday (November 22nd) we still had a good crowd. Bingo players are definitely a dedicated group of people. We could still use some help with the Bingo. It is not hard work and it can be lots of fun. Come on out and sign on as a worker.

The paperwork for the Grand Lodge approval of the new Lodge is still being assembled. When we get the needed approvals we can start moving some dirt. Hopefully it will be completed soon so that we can see some actual progress on our new home.

There are many activities planned for the coming holiday months. Keep an eye on the calendar and come out and enjoy the company. This is the way to an active Lodge. We'll keep the light on for you.

Yours in Elkdome
Fred Kent



Bingo

From Richard Hughes- Manager

Bingo seems to be smoothing out some now. We still need volunteers to help. The Holiday season is here and we have regulars that deserve a break. Big KUDOS to those people (you know who you are)!

Orders will go out for supplies late this month and the 2005 application for our new license is complete and will be mailed soon.

Donations of small gifts to be given out December 20th as door prizes are appreciated! Deadline is December 18th. The pumpkins given out on Halloween and turkeys on Thanksgiving were a big success. Thank you to those who donated!

If no one wins prior to December 20th the top-3-lines will BE given out. This game will be worth \$300. Remember, we're open to the public. That means members, family, friends.. bring everyone!

A huge "Thank You" to Mike Rudloff and Mary Lou Carlos for taking over the kitchen. They serve a delicious menu, sodas, coffee and hot chocolate every Monday.

Snacks are available up front for those who like to munch. There's also Monday Night Football in the Lodge for those members who want to wait for other players.

It doesn't matter if you help or play, come on down on Monday nights and we'll all have fun. I thank everyone for your support at Elks Bingo.



Merry Christmas
From Deming Elks 2799



Sandwiches now being served daily!

**** Lodge Lounge Hours ****

Monday-Friday 11:30 am-7 pm; Saturday 1-7 pm

Broadband Internet Access - Video Game - Closed Sunday

Customer Appreciation Mon.-Sat. 4-7 pm

Domestic Beer \$1.50, Well Drinks \$1.75

**** Free Finger Food Friday at noon ****

**27 inch TV
Pool Table**

B.P.O. Elks #2799 Calendar of Events— Dec. 2004

| Sun | Mon | Tue | Wed | Thu | Fri | Sat |
|-----------------------------|------------------|-----|-----|---------------------|----------------------------|-------------------------------|
| | | | 1 | 2 Lodge Meeting | 3 | 4 Karaoke Night |
| 5 Elks Memorial Services | 6 Elks Bingo | 7 | 8 | 9 | 10 | 11 Monthly Pool Tournament |
| 12 | 13 Elks Bingo | 14 | 15 | 16 Lodge Meeting | 17 | 18 Christmas Party |
| 19 | 20 Elks Bingo | 21 | 22 | 23 | 24 | 25 Christmas Day |
| 26 | 27 Elks Bingo | 28 | 29 | 30 | 31 New Year's Eve Party | |

12/02-16/04 Lodge Meeting
Regular Lodge meeting at 311 E. Maple. There will be initiation on the 16th.

12/04/04 Karaoke Night
Karaoke Night from 6 pm till closing. Karaoke by Mike R. Snacks will be available.

12/05/04 Elks Memorial Services
Special Ceremony to honor departed Elks. Open to the Public. Begins at 11:00 am in the Lodge Room at 311 E. Maple. Juice, Coffee and Donuts will be served.

12/06-13-20-27/04 Elks Bingo
Elks Bingo at the DAV Hall on Diamond. Doors open at 5:30 pm, Early Bird at 6, and Regular Bingo at 7 pm. Open to the public. Snacks and meals will be served. Special giveaways for Christmas on the 20th.

12/11/04 Monthly Pool Tournament
Double Elimination 8 Ball Tournament. Entry fee is \$5. No advance sign up needed. Tournament begins at 1 pm. Contact Mike Rudloff 546-8848 (w) 546-4459 (h) . Finger foods will be available.

12/18/04 Christmas Party
Begins at 6 pm with a gift exchange (men buy for men, women for women, under \$10). Karaoke 7 pm 'till closing. Light snacks will be served, and special Christmas Drinks will be available.

12/25/04 Christmas Day Lounge closed.

12/31/04 New Year's Eve Party
Party begins at 8 pm. Celebrations at 10, 11 pm, midnight and 1 am. Open 'till 2 am. Karaoke all night long. Buffet beginning at 10 pm, complimentary glass of Champagne and party favors. Cost is \$8 per person or \$15 a couple.



Finger Food Friday by Erik
Scott, noon each week—
Customer appreciation Mon.—Sat.
4-7 pm. \$1.50 beer, \$1.75 well



12/19 Connie G. Smith
12/19 Donald M. Shearer
12/20 Arnold Lively
12/21 Doris M. Cummings
12/22 Florence E. Irwin
12/26 Sandra L. Hawley
12/29 Margaret Maxwell
12/29 Curt L. Russell

12/5 Maryellen Jankel
12/6 Abel L. Delgado
12/6 Ted Lautner PER
12/8 David J. Harrington
12/9 Richard V. Salesses
12/13 Kevin W. Slater
12/17 Robert Turner
12/19 Von Rue Crawford

Sickness & Distress: Ted Lautner's mother fell and will require hospitalization. Also Harriett Kirich PER is going in for Hip Replacement surgery. Remember Sickness and Distress is Always in Order. Contact Leading Knight Ted Lautner PER or the Lodge Secretary.

Stray Elks: The following Elks made a recent visit to Deming.
10/29 John Gibson, #140, Mount Vernon, OH; 10/30 Al Lindgrin, #1972, Sweet Home, OR; 10/30 Jim Settles, #1777, Lakewood, CO; 10/30 Loren Sorheim, #1003, Virginia, NM; 10/30 L. A Berter, #1319, Lamar, CO; 11/2 Warren Kerfer, #2707, Benton, KY; 11/2 Bill Petumenos, #1353, Casper, WY; 11/3 David R. McLeroy, #1929, Parker, AZ; 11/5 Neil Kaylor, #1621, Allegan, MI; 11/9 Doris Sepulveda, #187, El Paso, TX; 11/9 E. O. Fornener, #689, DeSoto, MO; 11/9 D. M Sefubed, #187, El Paso, TX; 11/9 Carl Carlson, #2131, Willcox, AZ; 11/9 Ron Darnell, #413, Silver City; 11/9 Gilbert Montes, #2750, T or C; 11/10 Blaine Thiers, #2809, Globe, AZ; 11/10 Ray & Pat King, #402, Eau Claire, WI; 11/15 D. S. Kerr, #1813, Lordsburg; 11/24 Ralph & Roberta Pensoneau, #1747, Farmington, NM

Building Project ..

From Dave Cummings— Chairman

First, I would like to take a moment and thank everyone who helped to retile the back bar-kitchen area. Thanks to Mike Rudloff, Ed Mills and Roger Bladow for taking time on a Sunday to begin the project. Also thanks to the ladies who brought in food. We ran a little short on tile, but now have additional supplies and the remainder of the kitchen and back bar area will be retiled in the near future.

While we are all anxious to get going on the new Lodge, we still need to maintain our current location. The complete tile project should come in at just a little over \$200. The funds are coming from the bar account.

On the subject of our new Lodge, by the time you get this newsletter we will have had our first meeting (Tuesday, November 30th at 5 pm).

Mike Rudloff has drawn up plans for a new building which will be much smaller than the original drawings, but still very functional. The building committee, which includes Ed Mills, Mike Rudloff and Bobby Kirich with myself as chairman, will also be discussing how the project can be financed. The future of the Memorial Wall is something that I would like to bring to the membership.

The paperwork for Grand Lodge approval of the land donation should be sent off in the new few days. It has been

delayed to obtain necessary financial information from our accountant.

A jar will soon be set out on the bar for donations for the Building Fund. Every nickel and dime helps. However, if you would like to make a larger contribution, those are appreciated even more. Contact the Lodge Secretary to make a donation.

Ladies Only

The Ladies Brunch on November 20th was a great success. Games were played with prizes awarded. Waffles with special syrups, fried chicken and salads, fresh fruit and chocolate goodies were abundant. Food, fun and laughs helped us get to know each other better. By consensus, the next Fun Day we plan will be open to all members.



December Bartender Schedule

Monday 11:30-4 pm— Sue Burdette
Monday 4-7 pm— Carl Olsen
Tuesday 11:30-4 pm— Steve Eberhard
Tuesday 4-7 pm— Roxy Dubiskas
Wednesday 11:30-4 pm— Fred Kent
Wednesday 4-7 pm— Curt Russell
Thurs. 11:30-4 pm— Dave Cummings
Thursday 4-7 pm— Carl Olsen
Friday 11:30-4 pm— Erik Scott
Friday 4-7 pm— Mike Hedrick
Sat. 1-7 pm— open (Dave Johnson)

Schedule subject to change